

Meet The Team

The Directors and Management



Claire Griffiths

Manager, Keyworker, DSL and SENCO
Qualified to Level 3 childcare



Sue Theis

Deputy Manager, Keyworker, Forest School leader and Health and safety role.
Qualified to Level 3 in childcare

The Practitioners



Jackie Kelly

Keyworker
Qualified to Level 3 childcare



Tamara Norgon

Keyworker
Qualified to Level 3 childcare



Elaine Newman

Keyworker, Forest school leader
Qualified to Level 3



Kerrie Greenhill

Chef and Pre-School Assistant
Qualified to Level 3 childcare



Liz Davis

Pre-School Assistant



Hayley Pryer

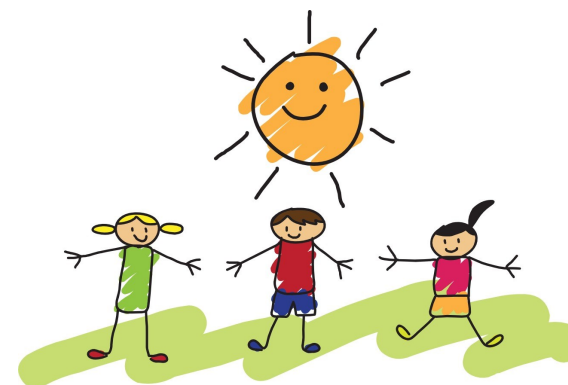
Pre-School Trainee



Leia Garland

Apprentice

Leia is currently doing her Level 3 apprenticeship with us.



Pre-School On The Marsh

Pre-School On The Marsh is a Community Interest Company (CIC) which offers

sessions for children aged 2 years to 5 years and a Pre-School for the community that also accepts government funding.

Set in idyllic surroundings at Stanpit marsh, a place where children can learn through play and prepare for school under the supervision of a highly experienced and qualified staff team.

"Children learn as they play. Most importantly, in play children learn how to learn."

Directors: Claire Griffiths (Manager) and Sue Theis
Pre-School location: TS Orestes, Stanpit Marsh, Christchurch, Dorset BH23 3LY
Telephone: 07769210278 email: enquiries@preschoolonthemarsh.co.uk



Pre-School

On The Marsh

Our Aims

- ◆ To provide a safe, secure and stimulating learning environment both inside and outside, where children can feel secure valued and confident and give them a sound basis for their progression to school.
- ◆ To help children develop a sense of achievement, irrespective of their needs and abilities, and to discover that learning is a pleasurable experience.
- ◆ To enhance the development and education of children in a parent involved setting so as to create an atmosphere of mutual respect.
- ◆ To offer quality affordable childcare early years learning in accordance with the early years foundation stage curriculum (E.Y.F.S)
- ◆ To ensure equality of opportunity for all children and their families.
- ◆ To provide fun and friendship for children and the adults concerned with their care.
- ◆ To provide individual care and attention to children by providing a high ratio of adults

What we offer your Child

- Care and education from highly experienced and qualified staff working on a high adult to child ratio
- Learning opportunities and assessment following the E.Y.F.S curriculum leading to approved learning outcomes
- The support of a personal Keyworker
- Fresh healthy food options daily
- Regular walks and outings in our beautiful surrounding areas
- Option of AM, PM or Full Day sessions and early drop off and late pick up options
- Opportunities for you and your family to be directly involved in the activities of the group and in your child's progress.
- Provided lunches (charge applies)
- Forest School Sessions
- Dedicated area with high staff ratios for 2yr olds

Events

Yearly events include:

Regular Walks on the marsh at Stanpit
 Annual Easter egg hunt
 End of year trips
 End of year Celebration day
 Christmas concert/nativity
 Christmas party
 Parent involvement days

And much more added every year!



Pre-School

On The Marsh

Pre-School On The Marsh

TS Orestes
 Stanpit Marsh
 Stanpit
 Christchurch
 Dorset

Tel: 07769210278 /07402024204

Email: Enquiries@preschoolonthemarsh.co.uk

Ages:

Pre-School On The Marsh accepts children from 2 years until 5 years old or when they begin school

Opening hours:

Morning sessions	9.15am – 12.15pm Monday to Friday
Afternoon sessions	12.15pm—3.15pm Monday to Friday
Full Day sessions	9.15am—3.15pm Monday to Friday
Forest School Sessions	9.30am - 12.30pm Tuesdays and Thursdays

We also offer an early start and late pick up service please see attached information for details.

Costs:

Please see attached price list for full details of costs.

Session rates are reviewed annually in April and an increase may occur

For more information or to book a place for your child please contact us on 07769210278 / 07402024204 Email: Enquiries@preschoolonthemarsh.co.uk or come and visit us for a play and look around we always welcome visitors to our setting.